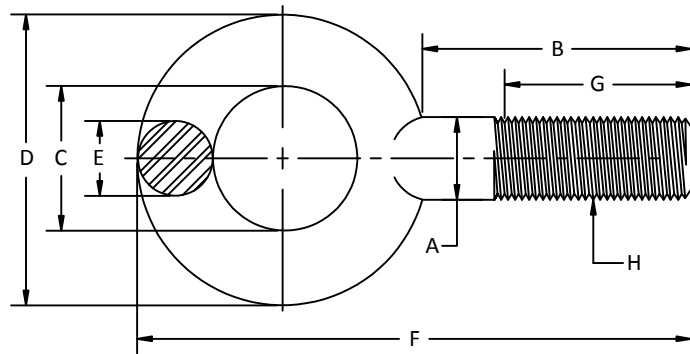


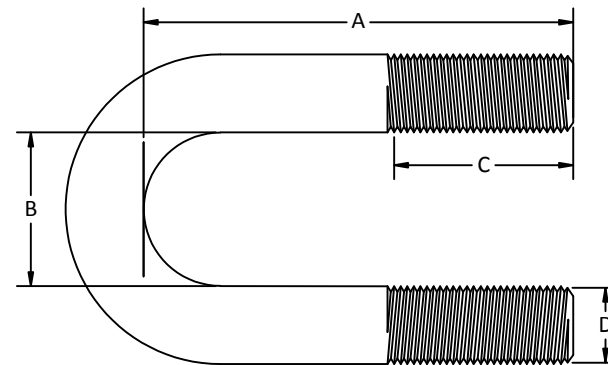
BENT BOLTS

Nominal Size	A		B				C		D	E		F		G		H
	Shank Diameter		Shank Length				Eye ID		Nominal Eye OD	Eye Sect. Diameter		Overall Length		Min Length Full		Thread Size UNC-2A
	Max	Min	Style A		Style B		Max	Min		Max	Min	Max	Min	Style A	Style B	
			Max	Min	Max	Min										
1/4	0.28	0.25	1.06	1.00	1.06	1.00	0.81	0.69	1.19	0.25	0.19	2.38	2.06	0.75	0.75	0.250-20
5/16	0.34	0.31	1.19	1.12	1.13	1.06	0.94	0.81	1.44	0.31	0.25	2.75	2.44	0.81	0.75	0.313-18
3/8	0.41	0.38	1.38	1.25	1.25	1.12	1.06	0.94	1.69	0.38	0.31	3.19	2.81	0.88	0.75	0.375-16
7/16	0.47	0.44	1.50	1.38	1.25	1.13	1.12	1.00	1.81	0.41	0.34	3.44	3.06	1.00	0.75	0.438-14
1/2	0.53	0.50	1.62	1.50	1.25	1.13	1.25	1.12	2.12	0.50	0.44	3.88	3.50	1.12	0.75	0.500-13
9/16	0.59	0.56	1.75	1.62	1.34	1.21	1.31	1.19	2.25	0.53	0.47	4.12	3.75	1.25	0.84	0.563-12
5/8	0.66	0.63	1.88	1.75	1.44	1.31	1.44	1.31	2.56	0.62	0.56	4.56	4.19	1.38	0.94	0.625-11
3/4	0.78	0.75	2.12	2.00	1.62	1.50	1.56	1.44	2.81	0.69	0.62	5.06	4.69	1.62	1.13	0.750-10
7/8	0.91	0.88	2.38	2.25	1.88	1.75	1.69	1.56	3.19	0.81	0.75	5.69	5.31	1.81	1.31	0.875-9
1	1.06	1.00	2.62	2.50	2.06	1.94	1.81	1.69	3.56	0.94	0.88	6.31	5.94	2.06	1.50	1.000-8
1 1/8	1.19	1.13	2.88	2.75	2.26	2.13	2.06	1.94	4.06	1.06	1.00	7.06	6.69	2.31	1.69	1.125-7
1 1/4	1.34	1.25	3.12	3.00	2.50	2.38	2.25	2.12	4.44	1.16	1.09	7.69	7.31	2.50	1.88	1.250-7
1 1/2	1.59	1.50	3.62	3.50	2.87	2.75	2.56	2.44	5.19	1.38	1.31	8.94	8.56	3.00	2.25	1.500-6
1 3/4	1.84	1.75	3.88	3.75	3.31	3.18	3.00	2.75	6.00	1.62	1.50	10.12	9.50	3.19	2.62	1.750-5
2	2.09	2.00	4.25	4.00	3.87	3.62	3.44	3.06	6.88	1.88	1.75	11.44	10.56	3.38	3.00	2.000-4.50
2 1/2	2.62	2.50	5.25	5.00	4.75	4.50	4.19	3.81	8.50	2.31	2.19	14.06	13.19	4.25	3.75	2.500-4

Eye Bolt

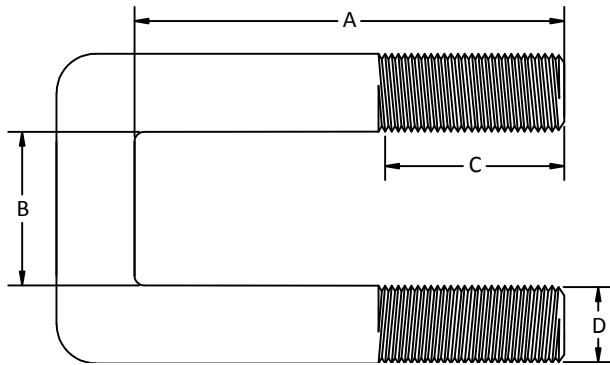


U-Bolt - Round Bend

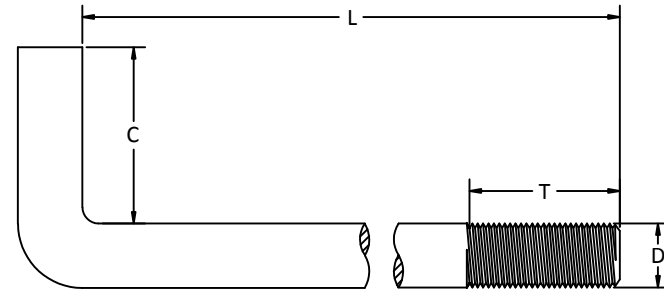


NOTE: Type 2 Eye Bolts with Shoulder Pattern and other special designs can be provided upon request.

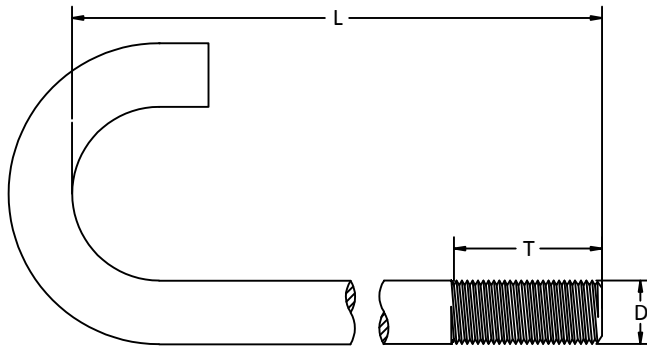
U-Bolt - Square Bend



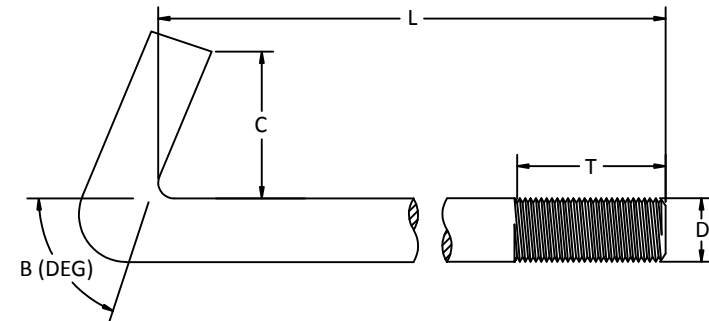
Hook Bolt - Right Angle Bend



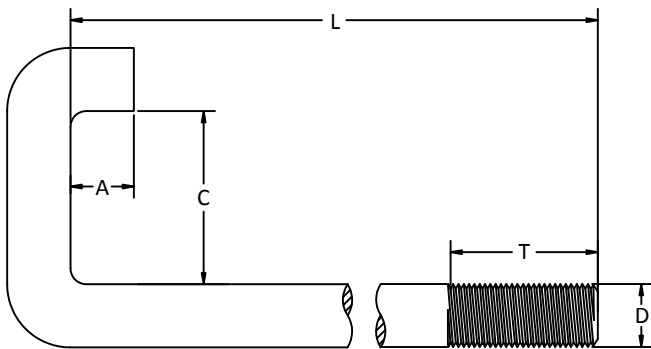
Hook Bolt - Round Bend



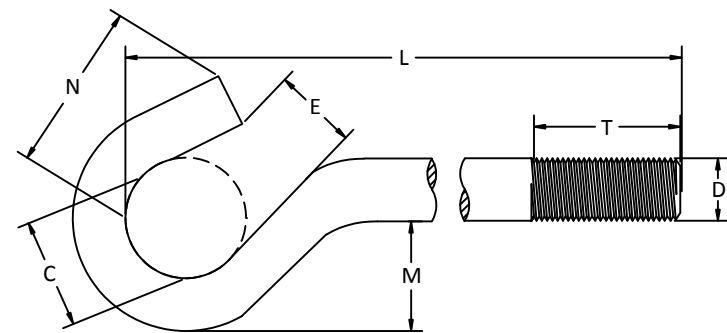
Hook Bolt - Special



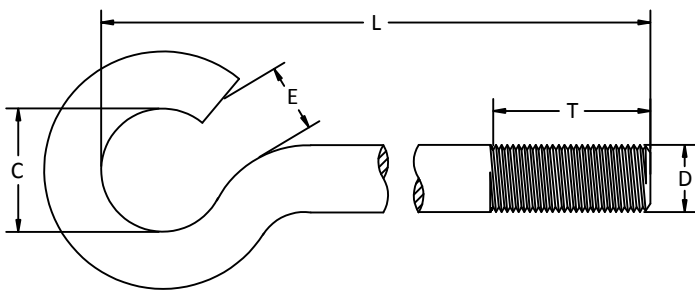
Hook Bolt - Square Bend



J - Bolt



Eye Bolt - Open



Eye Bolt - Closed

